

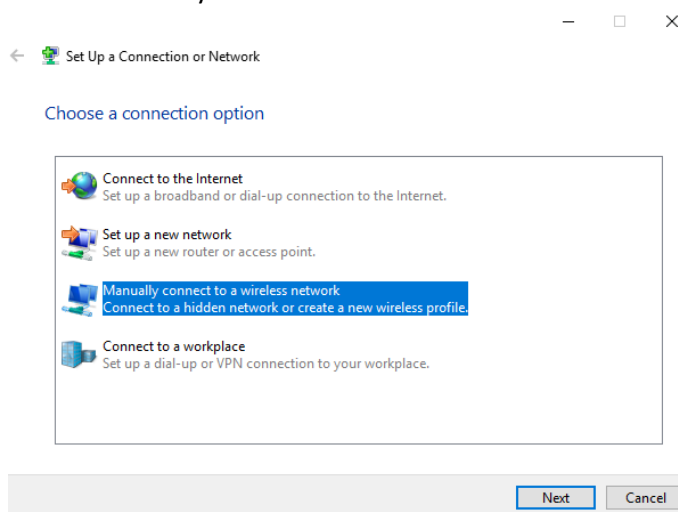
Secured Wireless Network

lambtonsecure is a secure wireless network that grants users access to additional resources while on Lambton College campus.

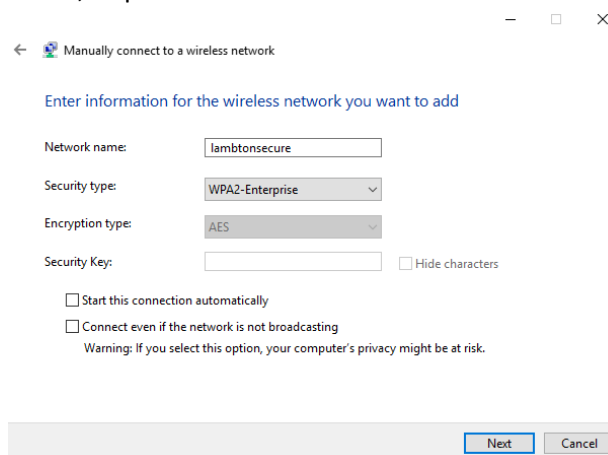
Configuration

Users will need to use their c0 number and password to log into the network. Generally, this prompts when you connect to lambtonsecure. The following step-by-step shows how to configure the network on Windows 10.

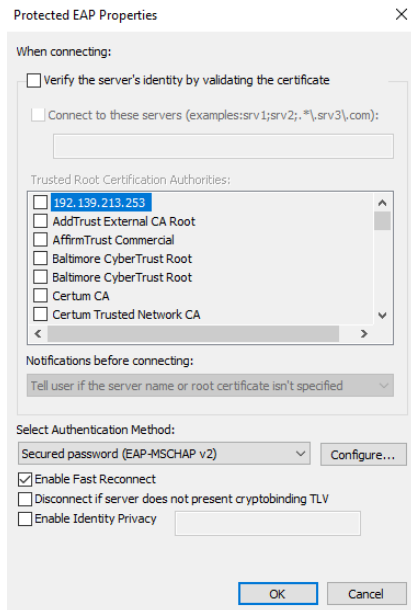
1. Open Control Panel > Network and Internet > Network and Sharing Center.
2. Select "Set up a new Connection or network."
3. Select "Manually connect to a wireless network."



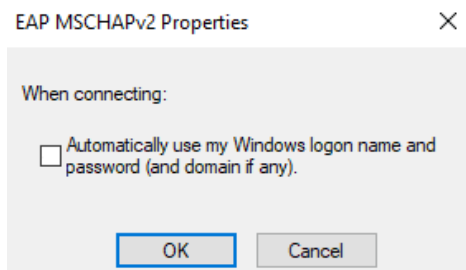
4. Enter the information for the new network, selecting or de-selecting the appropriate check-boxes, as pictured below.



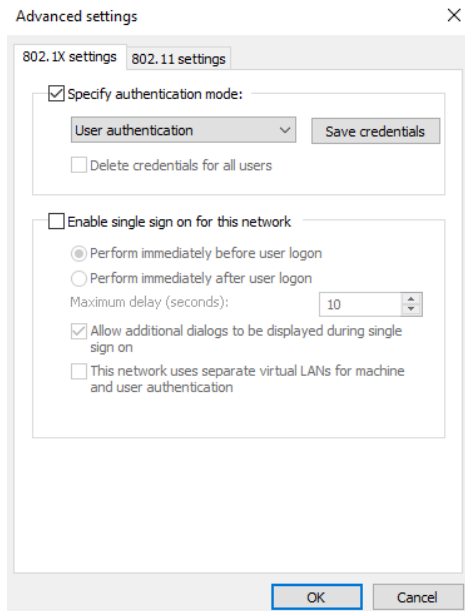
5. Select "Change connection settings."
6. Click the "Security" tab appearing next. De-select "Remember my credentials for this connection..."
7. Select the "Settings" tab on the same page.
8. De-select "Verify the server's identity..." and select "Enable Fast Reconnect."



9. Click the "Configure" button to the right of this option.
10. De-select "Automatically use my Windows logon name..." and click OK.



11. Click OK on the next screen.
12. Click the "Advanced Settings" tab, and on the "802.1X settings" page, select "Specify authentication mode". Then use the drop-down to select "User authentication".



13. Click OK, then OK, then close.

14. You should now be able to connect to lambtonsecure. If prompted for a log in, use your c0 number and password.